



Vitrified Tiles

600 x 600mm



ALLIANCE
VITRIFIED TILES

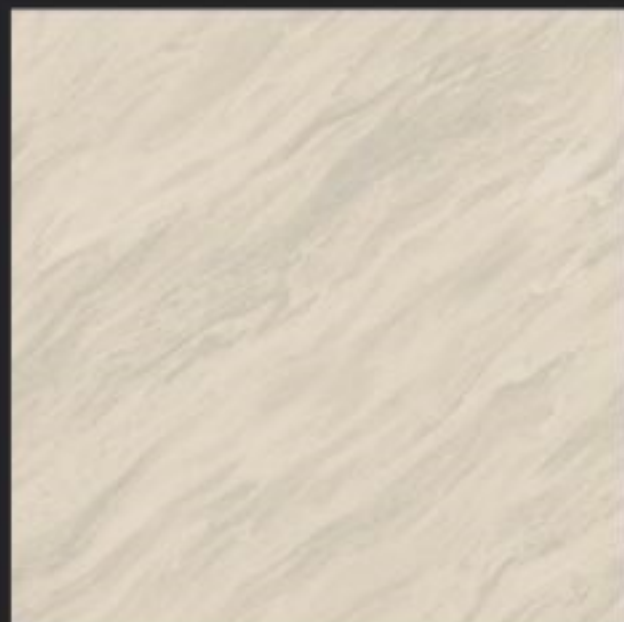
Allied With Your Dream Home...



600x600mm
VITRIFIED TILES



1045



1033



1037





ANTI-FREEZE



DEEP ABRASION RESISTANCE



CHEMICAL RESISTANCE



BREAKING STRENGTH



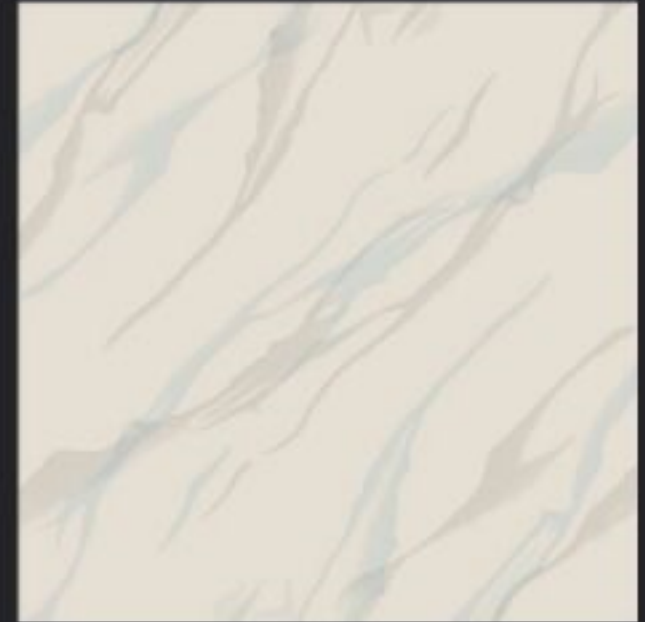
ANTI-SKID



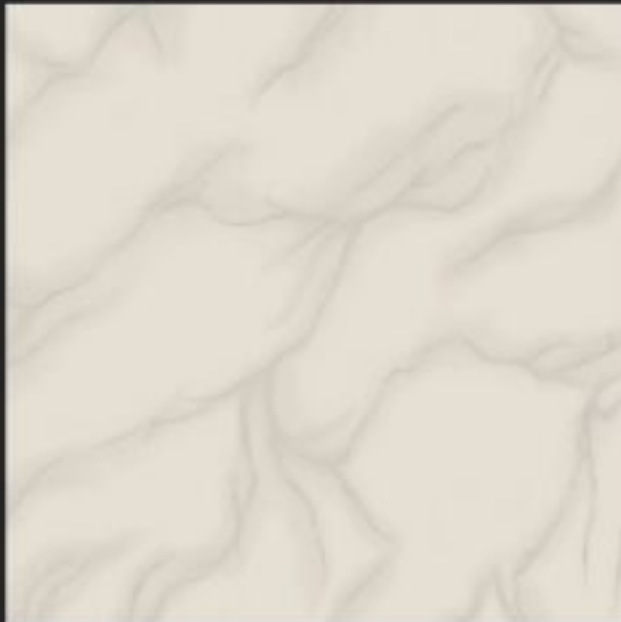
FLORA GREY



RIVER WHITE



BIANCO CREMA



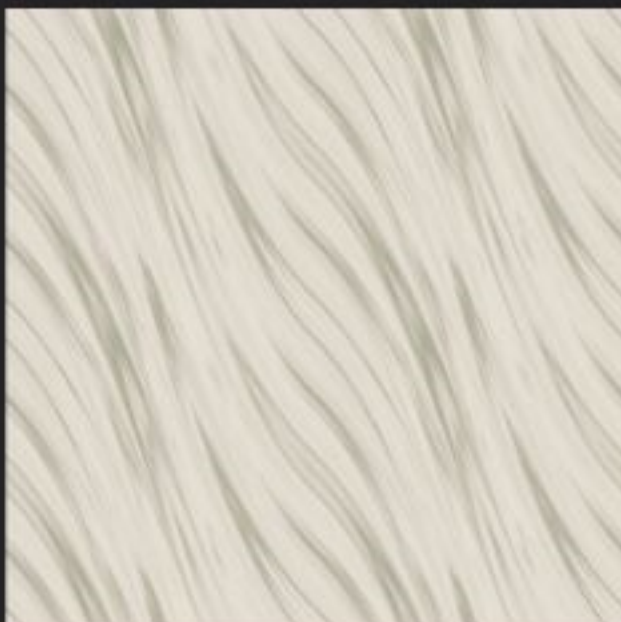
CRIMA GREY



STAR GALICHA



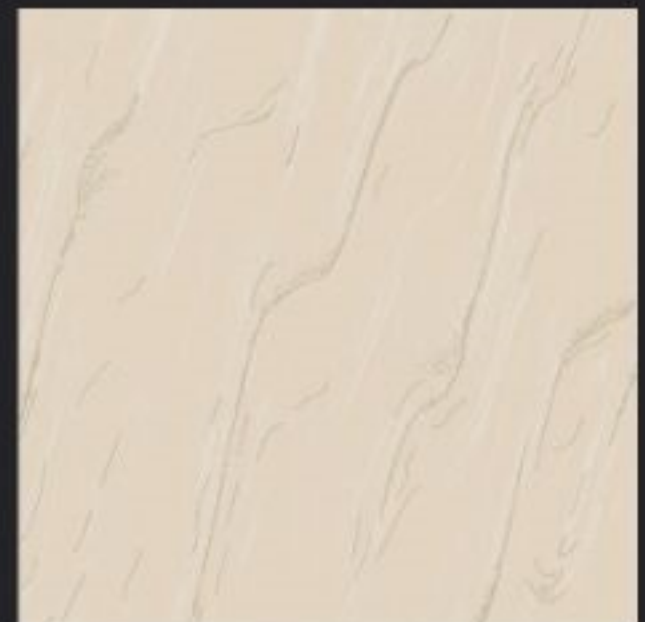
SPIDER BROWN



WAVE



1009



1021





600x600mm
VITRIFIED TILES



BROWN MARBLE



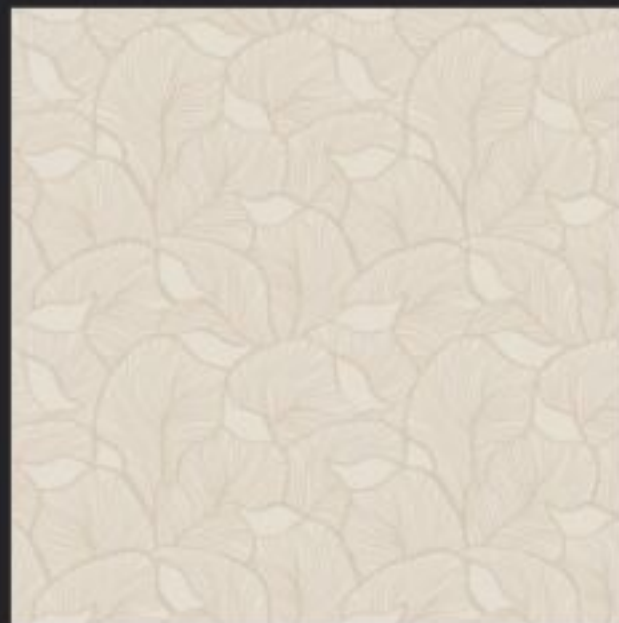
FEATHER TOUCH



BEST MARBO



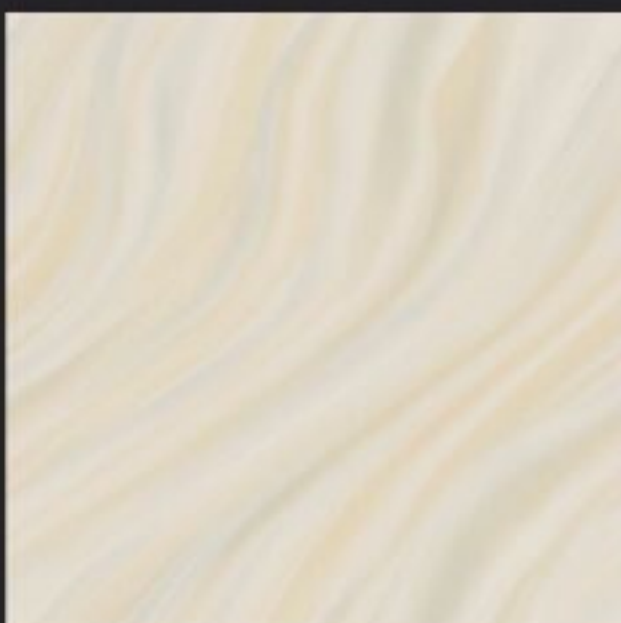
GRACE CAFFÈ



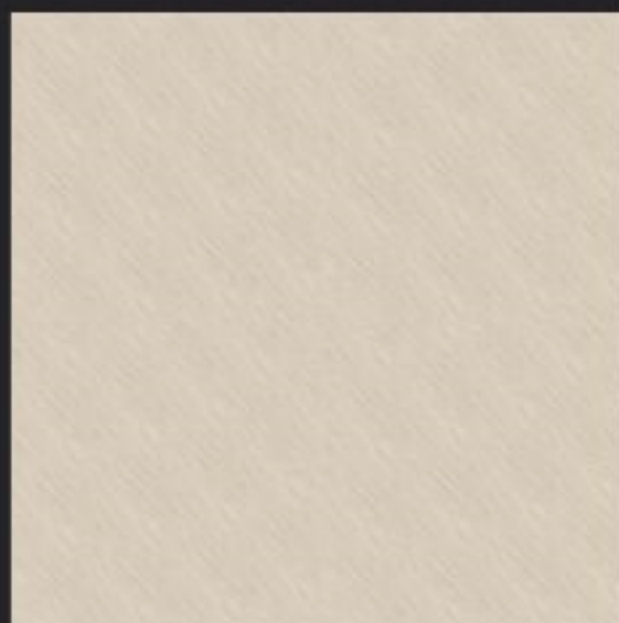
LEAVES



BLUE LINE



ROCK



SANDY BEIGE



CRETA



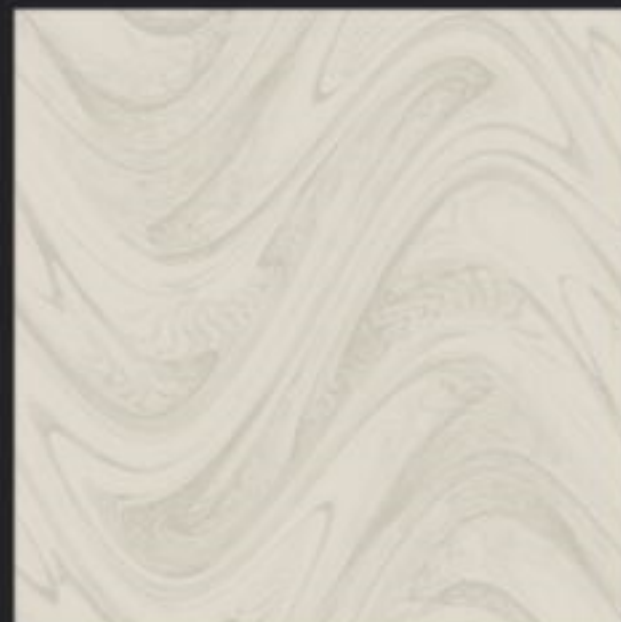
600x600mm
VITRIFIED TILES



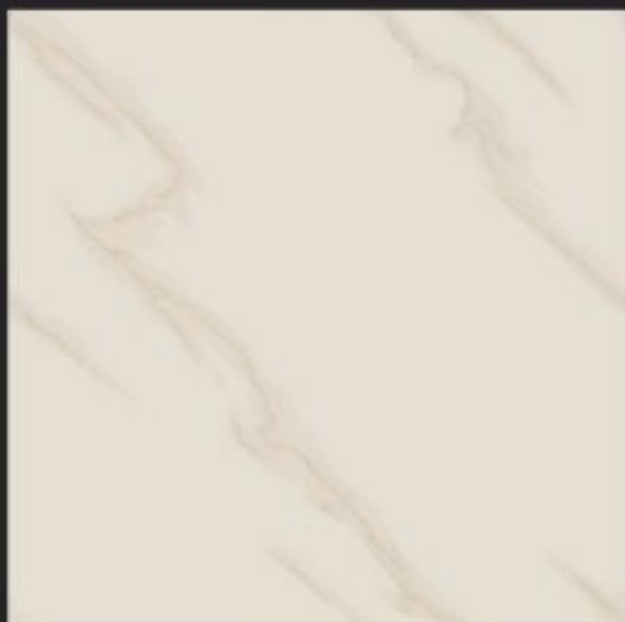
1038



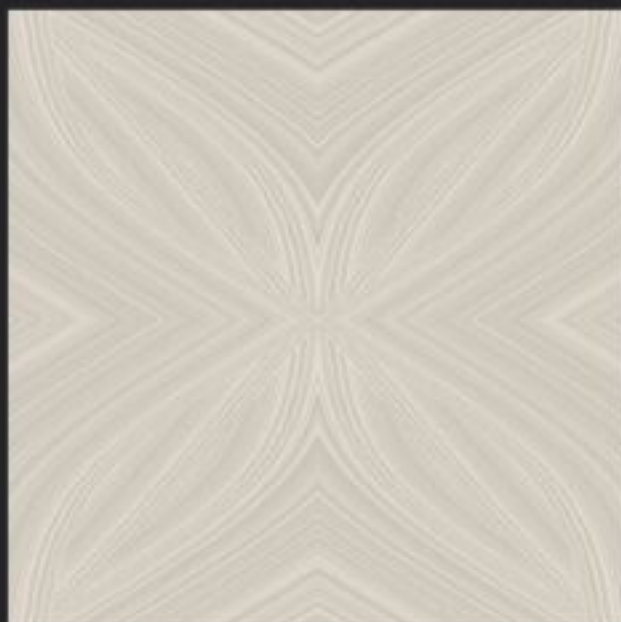
1039



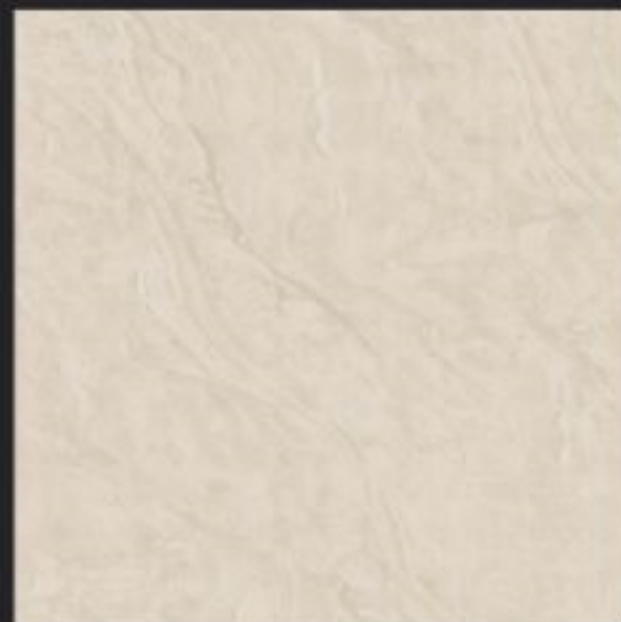
1040



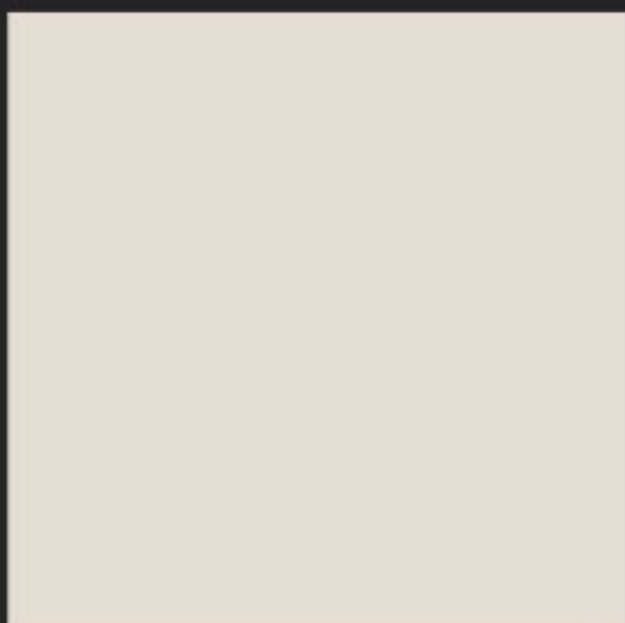
1046



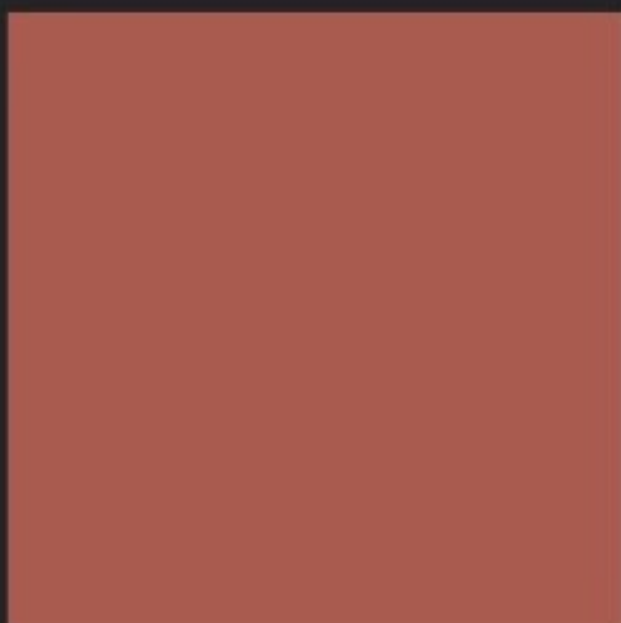
1049



1051



IVORY



TERRA COTTA



TECHNICAL ASPECTS

Sr. No.	PROPERTY	International Std. ISO 13006/EN 176 Group Bla	ALLIANCE VITRIFIED Value	Method of Testing
1.	Deviation in Length	±0.6%	±0.1%	EN 98
2.	Deviation in Thickness	±0.5%	±0.1%	EN 98
3.	Straightness of Sides	±0.5%	±0.1%	EN 98
4.	Rectangularity	±0.6%	±0.2%	EN 98
5.	Surface Flatness	±0.5%	±0.2%	EN 98
6.	Water absorption *	<0.5%	<0.05%	EN 99
7.	Mohs hardness *	> 6	> 8	EN 101
8.	Flexural Straightness *	> 27 N/mm ²	> 47 N/mm ²	EN 100
9.	Abrasion resistance	< 204 mm ³	< 144 mm ³	EN 102
10.	Skid Resistance (Friction Coefficient)	> 0.4	> 0.6	ASTM C-1028
11.	Breaking Strength *	1113 N	2830 N	ASTM C-648
12.	Density (g/cc)	> 2	2.4	DIN 51082
13.	Frost resistance	Frost proof	Frost proof	EN 202
14.	Chemical Resistance	No damage	No damage	EN 106
15.	Thermal Shock Resistance	No damage	No damage	EN 104
16.	Colour Resistance	No damage	No damage	DIN 51094
17.	Thermal Expansion	< 9 x 10 ⁻⁶	< 6 x 10 ⁻⁶	EN 103
18.	Stain Resistance	Resistant	Resistant	ISO 10545-14
19.	Moisture Expansion	Nil	Nil	ISO 10545-10
20.	Glossiness	—	Min. 65% - 70% reflection	Glossmeter

PACKING DETAILS

Size	No. of Tiles/Box	Coverage Area
600x600mm	4 pcs.	1.44 sq.mt.

APPLICATIONS



Colours shown are as accurate as the limitations of the printing process will allow. Prospective customers are advised to inspect a sample of the tile before ordering. Every effort has been made to ensure the accuracy of the information given. However, the company reserves the right to change the specifications without prior notice. Sometimes variations in shade or size being inherent to ceramic industry may occur. Before fixing, we advise you to follow the fixing instructions on the cartons of the tiles as no responsibility can be accepted by the company once the tiles have been fixed.

AMBANI GROUP COMPANIES

E export.ambani@gmail.com | sales.ambani@gmail.com

M +91-9830715112 | +91-8777842148

AMBANI COMPANIES (PLANT)

1. Ambani Vitrified Pvt Ltd(GVT) Morbi - Halvad, Unchi Mandal, Morbi -363641
2. Alliance Vitrified Pvt Ltd(NANO VITRIFIED) 8-A, National Highway, Feeder Road, Morbi -363642
3. Airson Ceramic Industries(10x15 TILES) 8-A, National Highway, Feeder Road, Morbi -363642
4. Ambani Ceramic(12X18 TILES) 8-A, National Highway, Feeder Road, Morbi -363642
5. Ambani Times(WALL CLOCK) Moon Nagar Chowk, Behind Lati Plot, Morbi -363641